



PROTECTION

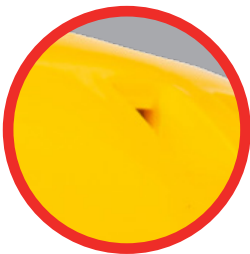


COMFORT



DURABLE

ASMARA 8050



CHARACTERISTICS

- The lightweight helmet shell of this safety helmet is made out of UV-resistant high-density polyethylene
- The inner part of the helmet can easily be adjusted by turning the knob
- Six-point plastic interior
- Includes an easily replaceable sweatband
- The helmet features 30-mm slots for attaching face and hearing protection accessories
- Three ventilation apertures on both sides of the helmet
- Weight: 337 grams
- Adjustable inside: 53 to 66 cm

Article number: 6.78.052.00

SUITABLE FOR ACTIVITIES IN E.G.

- Construction
- Industry
- Shipping
- Offshore
- Civil & hydraulic engineering
- Transport & logistics

COLOUR

Yellow

OTHER AVAILABLE COLOURS

- White (article number: 6.78.050.00)
- Blue (article number: 6.78.051.00)
- Orange (article number: 6.78.053.00)

SIZES

One size

PACKAGING

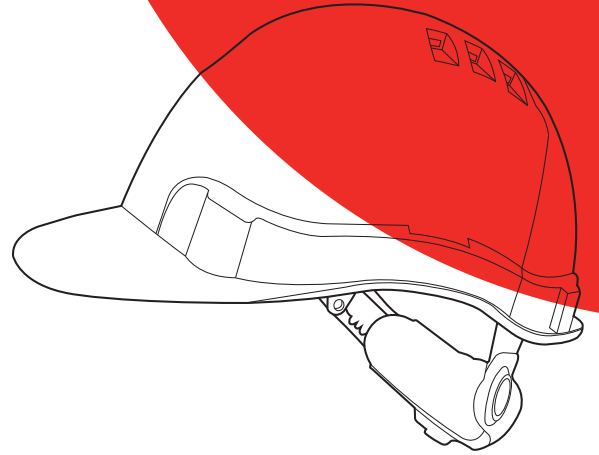
- 1 item in PE bag
- 20 items in outer box



EN 397:2012+A1:2012

PRODUCT INFORMATION

SIZE	ARTICLE NO.	EAN CODE 1 UNIT (PE BAG)	EAN CODE 20 UNITS (OUTER BOX)
One size	6.78.052.00	8718249038440	8718249038457



STORAGE, MAINTENANCE AND CLEANING

When the helmet is not being used or during transport, please store the helmet in a robust and suitable container to prevent exposure to direct sunlight. The helmet must also be kept away from chemical and abrasive substances and you must take care to prevent any damage through physical contact with other (hard) materials. Safety helmets are not to be stored on the rear shelf of a vehicle. The helmet can be cleaned with warm water and soap and a soft cloth. Do not use any abrasive substances or solvents to clean the helmet and avoid storing the helmet in direct sunlight or in places where it may come into contact with solvents.

TESTING INSTITUTE

These helmets are certified by: BSI Group The Netherlands B.V. (Notify Body No. 2797), John M. Keynesplein 9, 1066 EP Amsterdam, the Netherlands.

DECLARATION OF CONFORMITY

For a copy of the declaration of conformity, we refer you to the following link: www.oxxa-safety.com/doc

RELATED PRODUCTS



APIA 8000

Art. no. 6.78.002.00



PRAIA 8215

Art. no. 6.78.215.00



KAMPALA 8200

Art. no. 6.78.200.00



KIGALI 8205

Art. no. 6.78.205.00

YOUR SUPPLIER: